

## II. EXHIBITS

AERIAL IMAGE

**EXHIBIT A**

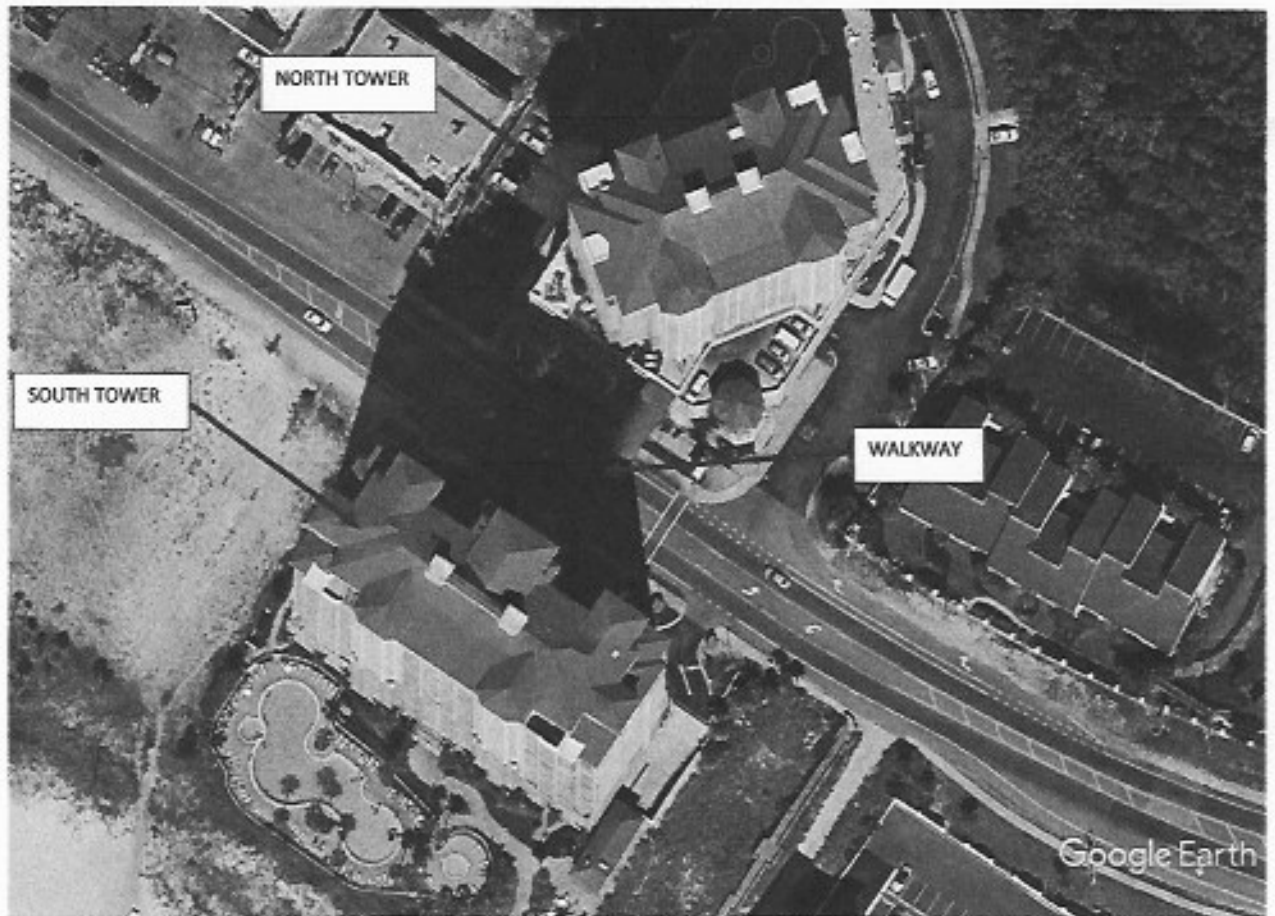
**AERIAL IMAGE**



# **EXHIBIT B**

## **SITE LAYOUT**

X



**EXHIBIT C**

**COMPUWEATHER – HURRICANE MICHAEL**

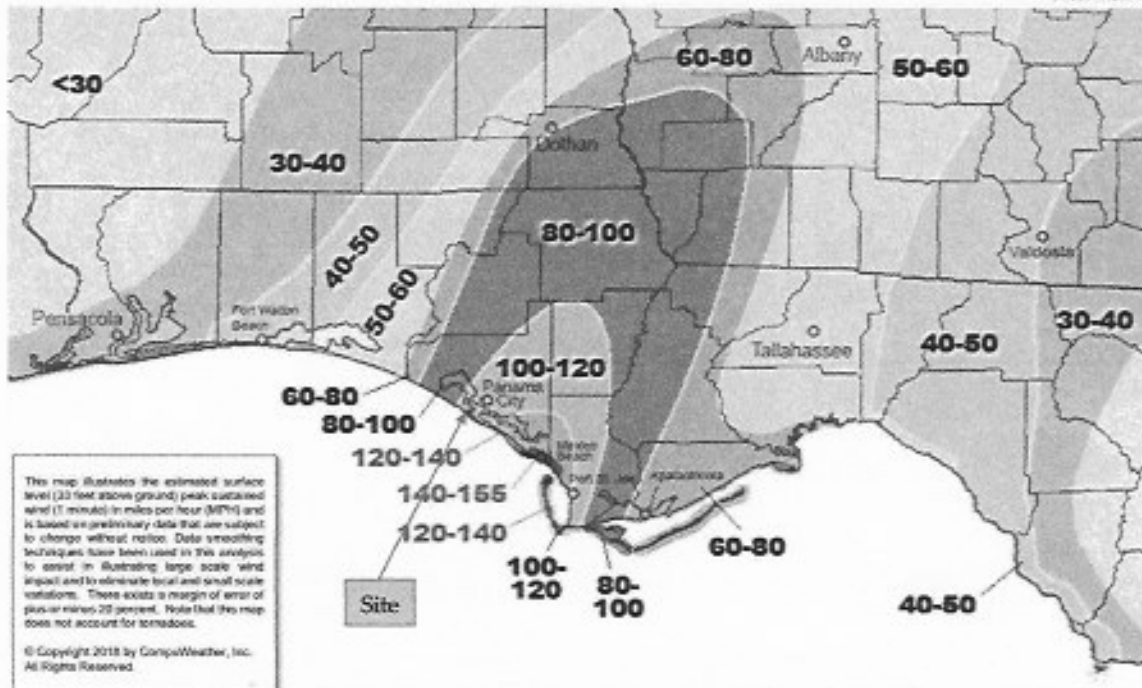
GRAND PANAMA BEACH RESORT CONDO ASSOCIATION  
PANAMA CITY, FLORIDA  
EXHIBIT C  
MKA PROJECT NO. 2020.2295

**CompuWeather**  
FORENSIC SERVICES DIVISION

800-825-4445  
www.compuweather.com  
experts@compuweather.com

**HURRICANE MICHAEL - OCTOBER 9-12, 2018**  
PEAK SUSTAINED WIND (1 minute) MPH - Florida Panhandle Close-Up

Prepared for use by Madison, Keppers & Associates, Inc.  
FOR GENERAL USE ONLY  
Not to be retransmitted without consent from CompuWeather  
October 30, 2018



1. CompuWeather data illustrating the maximum sustained wind speeds during Michael.

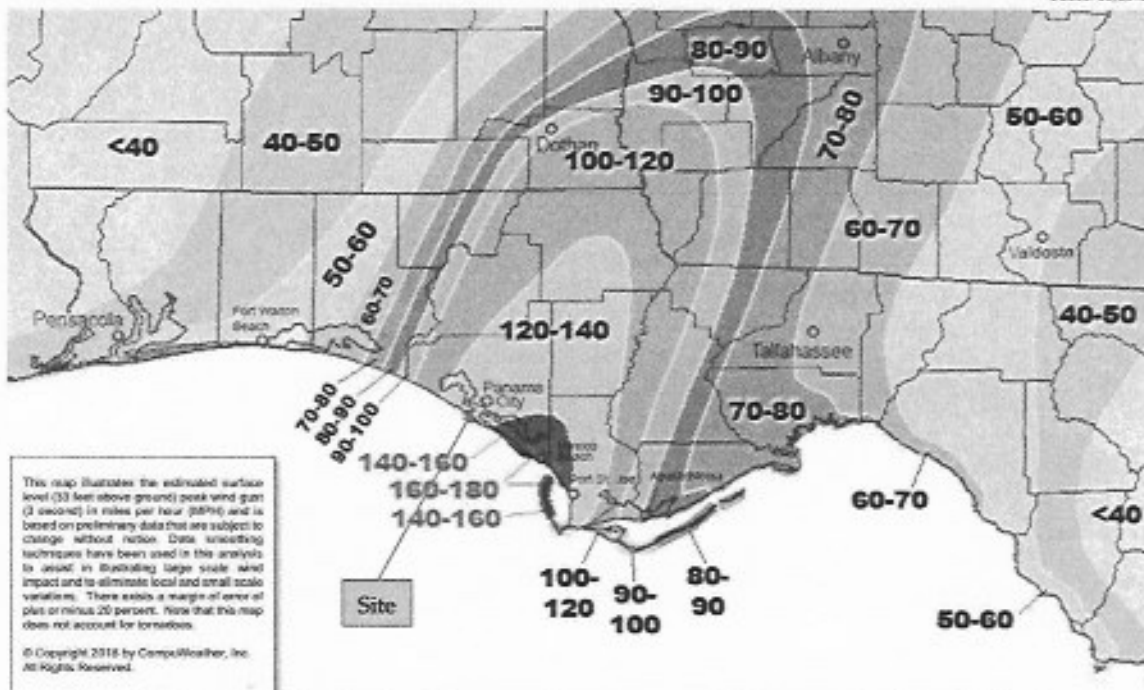
GRAND PANAMA BEACH RESORT CONDO ASSOCIATION  
PANAMA CITY, FLORIDA  
EXHIBIT C  
MKA PROJECT No. 2020.2295

**CompuWeather**  
FORENSIC SERVICES DIVISION

800-825-4445  
www.compuweather.com  
experts@compuweather.com

**HURRICANE MICHAEL - OCTOBER 9-12, 2018**  
PEAK WIND GUST (3 second) MPH - Florida Panhandle Close-Up

Prepared for use by Madson, Kneppers & Associates, Inc.  
FOR GENERAL USE ONLY  
Not to be retransmitted without consent from CompuWeather.  
October 30, 2018



2. CompuWeather data illustrating the maximum wind gust speeds during Michael.



GRAND PANAMA BEACH RESORT CONDO ASSOCIATION  
PANAMA CITY, FLORIDA  
EXHIBIT C  
MKA PROJECT NO. 2020.2295

**CompuWeather**  
FORENSIC SERVICES DIVISION

800-825-4445

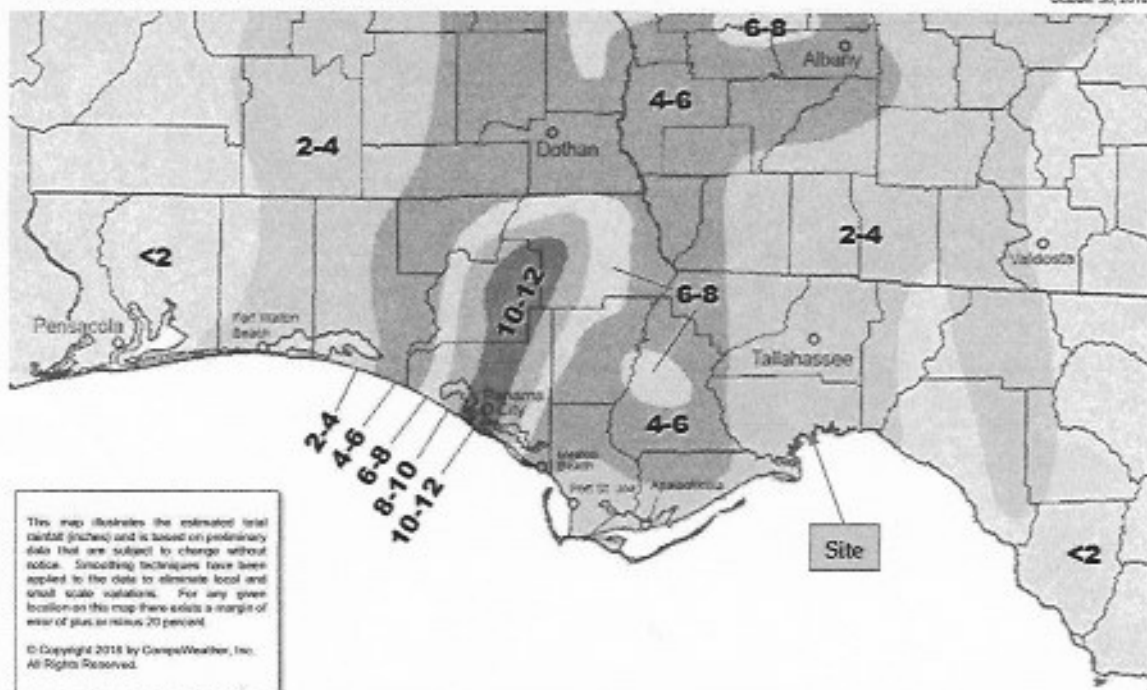
www.compuweather.com  
experts@compuweather.com

**HURRICANE MICHAEL - OCTOBER 9-12, 2018**

RAINFALL (inches) - Florida Panhandle Close-Up

Prepared for use by Madson, Kroppens & Associates, Inc.

Not to be retransmitted without consent from CompuWeather.  
October 30, 2018



3. CompuWeather data illustrating the cumulative rainfall during Michael.

GRAND PANAMA BEACH RESORT CONDO ASSOCIATION  
PANAMA CITY, FLORIDA  
EXHIBIT C  
MKA PROJECT No. 2020.2295

**CompuWeather**  
FORENSIC SERVICES DIVISION

800-825-4445

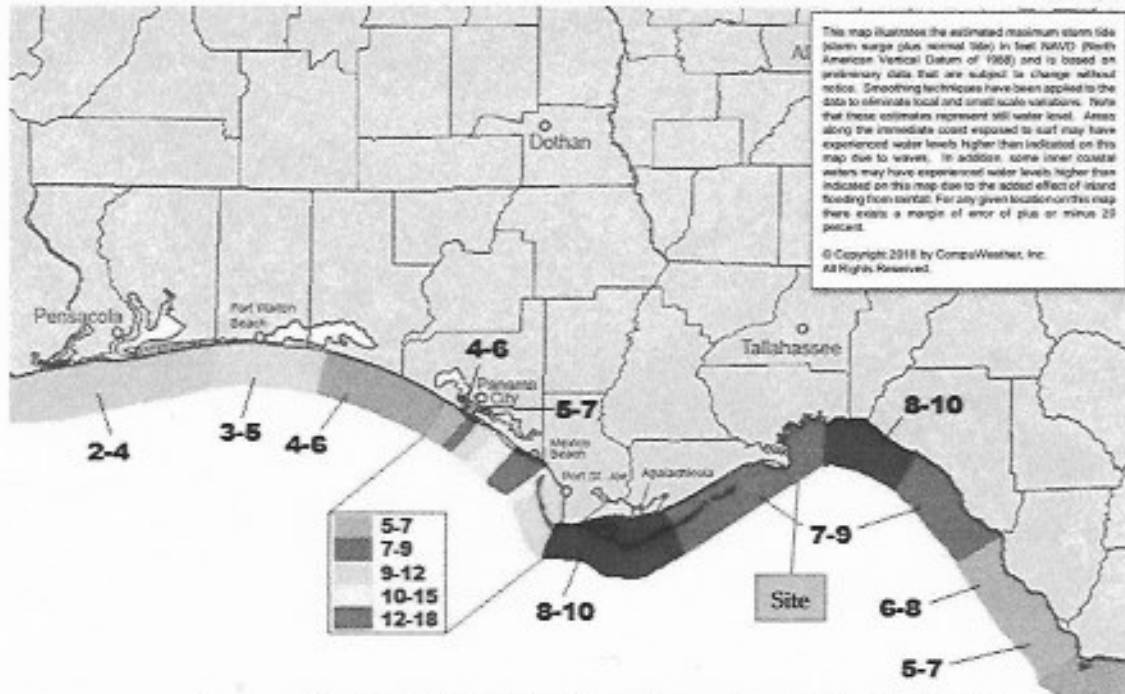
www.compuweather.com  
expert@compuweather.com

**HURRICANE MICHAEL - OCTOBER 9-12, 2018**

STORM TIDE (feet NAVD) - Florida Panhandle Close-Up

Prepared for use by Maizes, Kroppers & Associates, Inc.  
FOR GENERAL USE ONLY

Not to be retransmitted without consent from CompuWeather  
October 30, 2018



4. CompuWeather data illustrating the maximum storm tide during Michael.

GRAND PANAMA BEACH RESORT CONDO ASSOCIATION  
PANAMA CITY, FLORIDA  
EXHIBIT C  
MKA PROJECT NO. 2020.2295

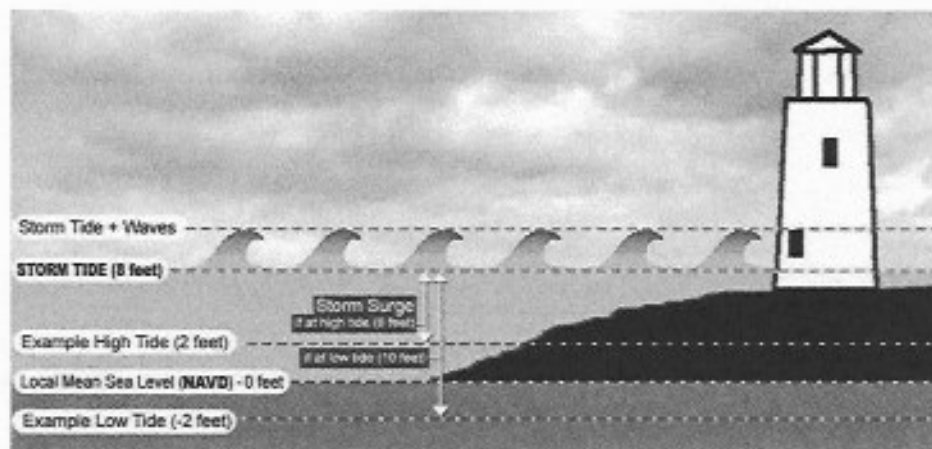
**CompuWeather**  
Site-Specific Historical Past Weather Reports

PROUDLY SERVING INSURANCE, LEGAL & ENGINEERING SINCE 1976

CompuWeather, Inc.  
Forensic Weather & Claims Division  
2566 Route 52  
Hopewell Junction, NY 12533 USA  
Phone: +1.845.227.8500  
Phone: +1.800.825-4445  
Fax: +1.845.227.8400  
experts@compuweather.com  
www.compuweather.com

## UNDERSTANDING STORM SURGE & STORM TIDE

The following illustrates conditions during a hurricane or tropical storm which may include tide fluctuation, storm surge, storm tide and wave activity:



**Tide** – The periodic (occurring at regular intervals) variations in the surface water level of the oceans, bays, gulfs, and inlets. Tides are the result of the gravitational attraction of the sun and the moon on the earth. There are generally two high tides and two low tides each day but there can be less. The two high tides each day do not have to be of equal height and the same holds true for the two low tides each day. Tides also differ in height on a daily basis.

**Storm Surge** - An abnormal rise in sea water level accompanying a hurricane or other intense storm, whose height is the difference between the observed level of the sea surface and the level that would have occurred in the absence of the storm. Storm surge is usually estimated by subtracting the astronomical tide from the observed Storm Tide.

**Storm Tide** - The actual sea water level resulting from the combination of Storm Surge and normal astronomical tide with reference to NAVD. Storm Tide represents the still-water level and does not include the added height of waves which also may be present. Storm Tide does not account for other conditions such as inland rainfall, freshwater flooding, and river currents which commonly affect non-coastal water levels.

**NAVD (North American Vertical Datum of 1988)** – NAVD is both a vertical and geodetic datum. Geodetic datums are a set of constants or points of reference used for calculating the coordinates of points on the Earth. Vertical datums are used to measure elevations or underwater depths. NAVD is the accepted standard and derived reference point used for elevations and vertical control surveying in the United States. It was adopted primarily to serve as a fixed constant for all areas since mean sea level (MSL) changes from area to area.

COMPUWEATHER IS A MEMBER OF THE FLEETWEATHER GROUP OF COMPANIES

### 5. CompuWeather storm tide definitions and graphic.