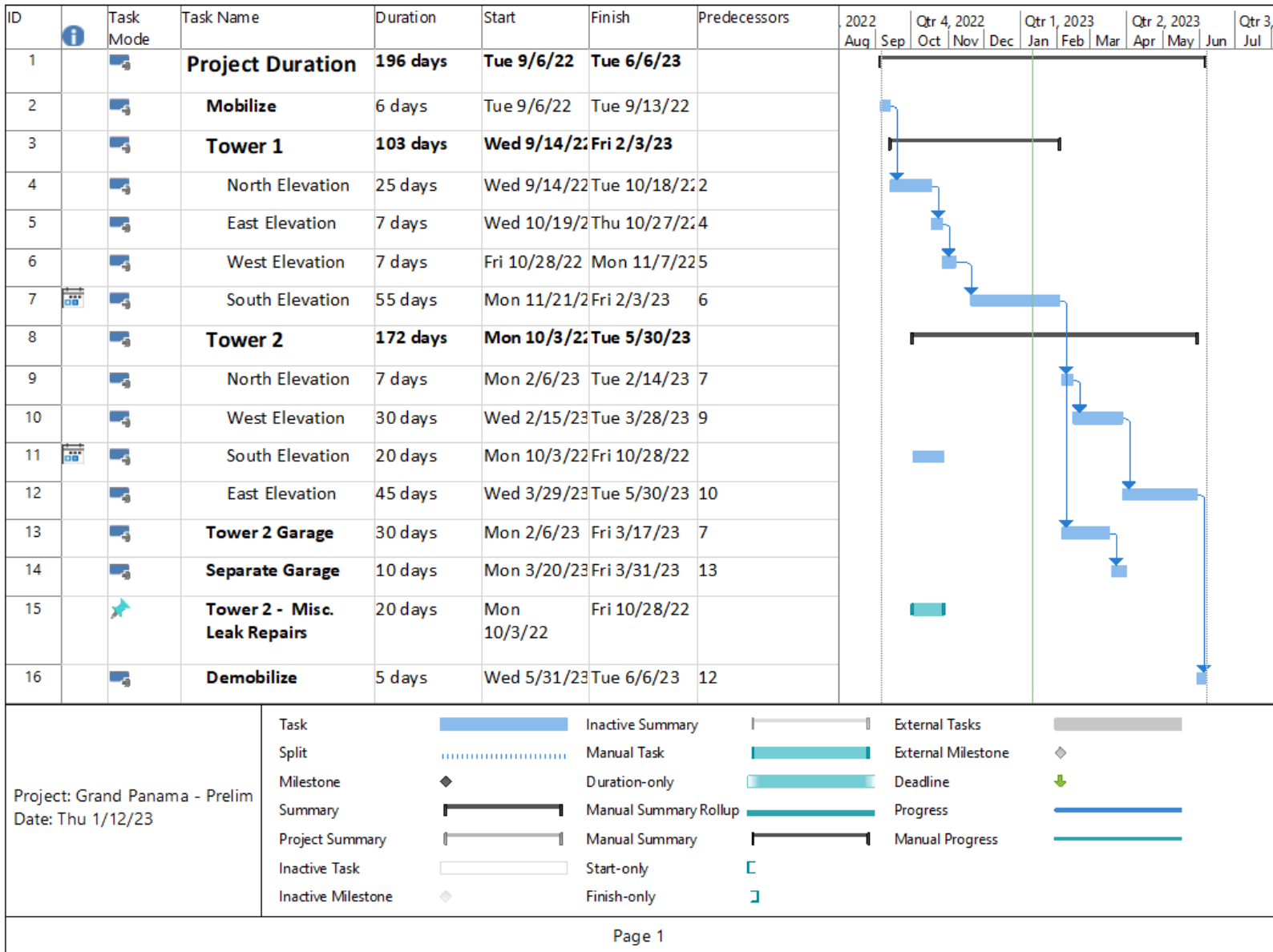




Grand Panama Towers 1 & 2

Progress Report

1-12-23



Schedule

- Adjusted the South Elevation timeframe
- Revised schedule to show that we have already completed tower 2 South Elevation
- Lost Work Days:
 - 9/28/22 – Strong Winds
 - 9/29/22 – Strong Winds
 - 10/13/22 – Rain
 - 10/17/22 – Rain
 - 11/10/22 – Wind/Rain
 - 11/11/22 – Wind
 - 11/15/22 – Wind/Rain
 - 11/25/22 – Fog/Humidity
 - 11/30/22 – Rain
 - 12/8/22 – Heavy Fog/Humidity
 - 12/14/22 – Strong Wind/Rain
 - 12/20/22 – Rain
 - 12/23/22 – Freezing Temperatures
 - 1/3/23 – Rain
 - 1/4/23 - Rain



Progress Photos

Areas in Progress



We are finishing up on Balconies 3-6 and anticipate moving the swing stages within the next couple days

Swing Stage Drops – Tower 1

