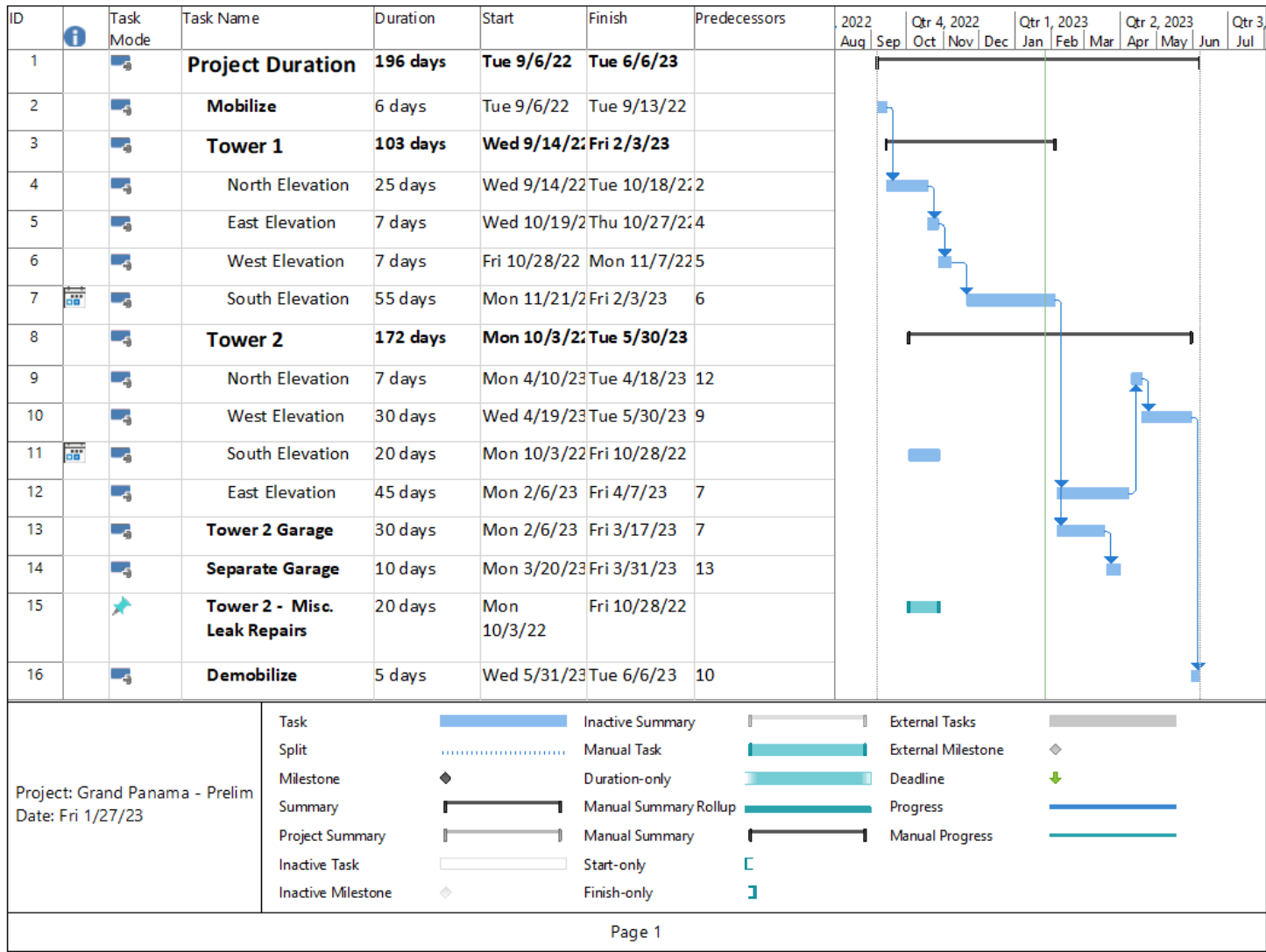




Grand Panama Towers 1 & 2

Progress Report

1-27-23



Schedule

- Rearranged Tower 2 to show us working on the balcony side first.
- Lost Work Days:
 - 9/28/22 – Strong Winds
 - 9/29/22 – Strong Winds
 - 10/13/22 – Rain
 - 10/17/22 – Rain
 - 11/10/22 – Wind/Rain
 - 11/11/22 – Wind
 - 11/15/22 – Wind/Rain
 - 11/25/22 – Fog/Humidity
 - 11/30/22 – Rain
 - 12/8/22 – Heavy Fog/Humidity
 - 12/14/22 – Strong Wind/Rain
 - 12/20/22 – Rain
 - 12/23/22 – Freezing Temperatures
 - 1/3/23 – Rain
 - 1/4/23 – Rain
 - 1/27/23 - Rain



Progress Photos

Areas in Progress



We are in progress on the 7, 8, 9 balcony stacks

Swing Stage Drops – Tower 1

