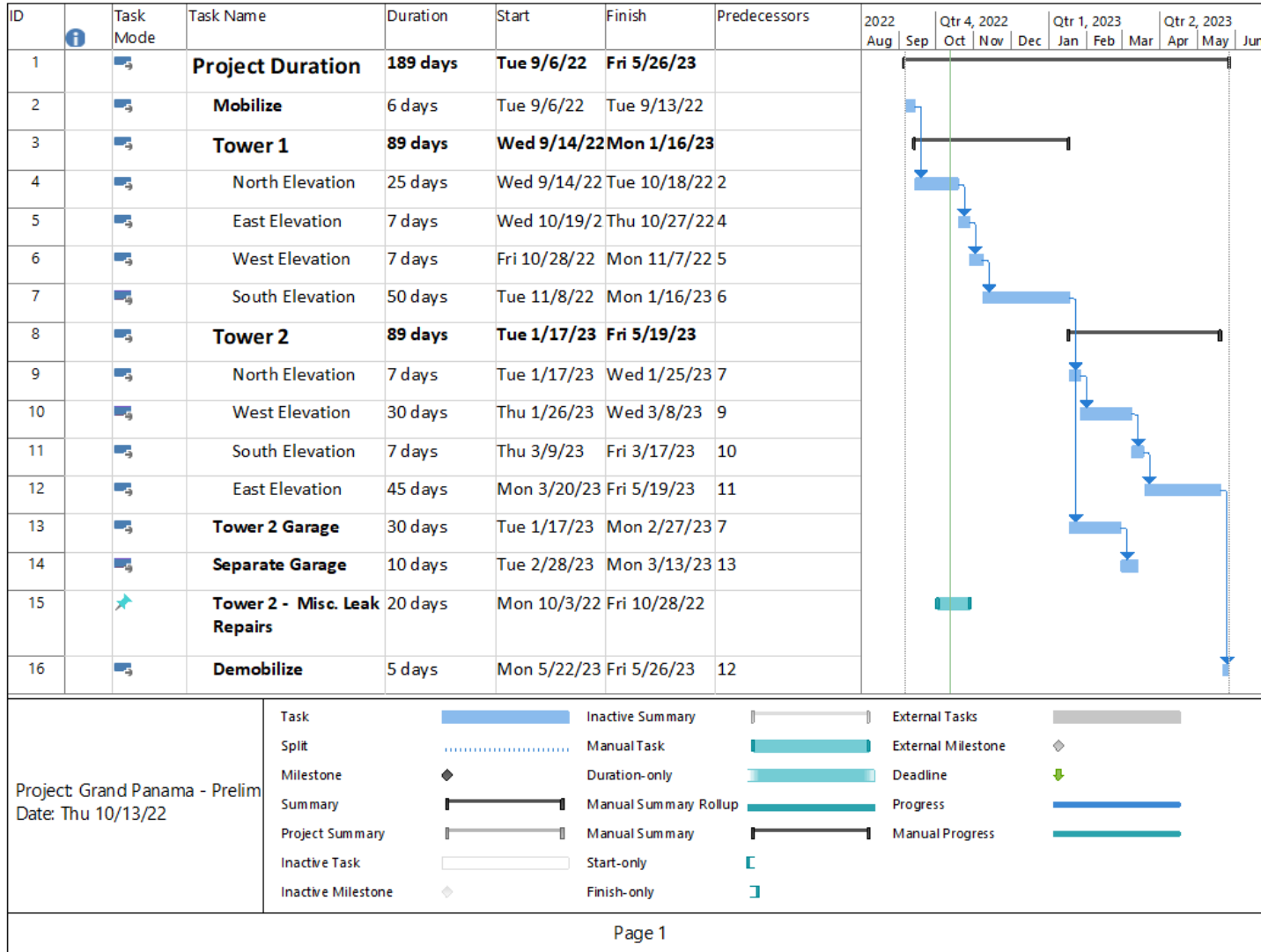




Grand Panama Towers 1 & 2

Progress Report

10-13-22




Schedule

- Slight revision to show us finishing the North Elevation by middle of next week, 5 days ahead of schedule, but I put those 5 extra days towards the South Elevation of Tower 1 for now.
- Lost Work Days:
 - 9/28/22 – Strong Winds
 - 9/29/22 – Strong Winds



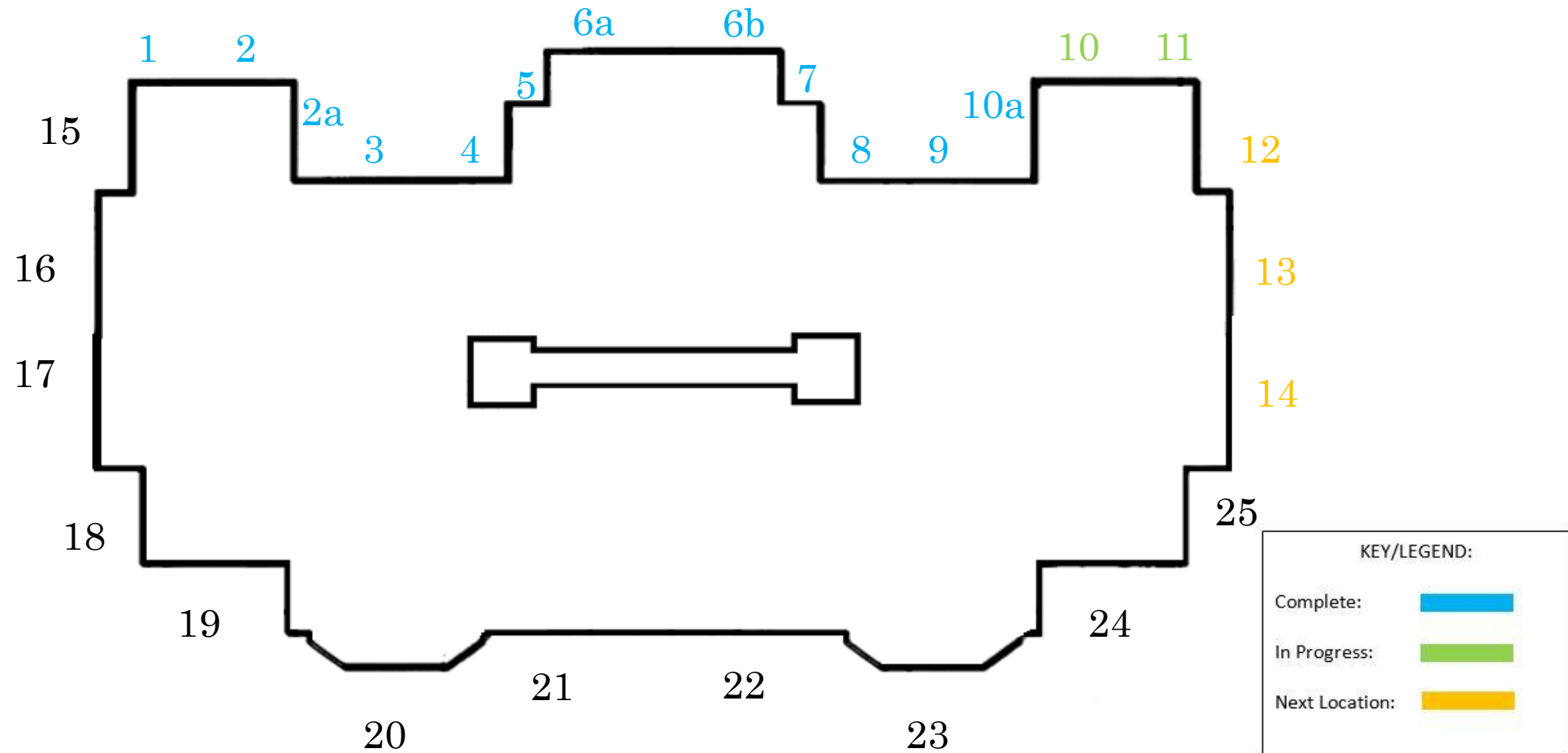
KEY/LEGEND:

Complete:	
In Progress:	
Next Location:	

Areas in Progress



Swing Stage Drops – Tower 1



Swing Stage Drops – Leak Repairs – Tower 2

