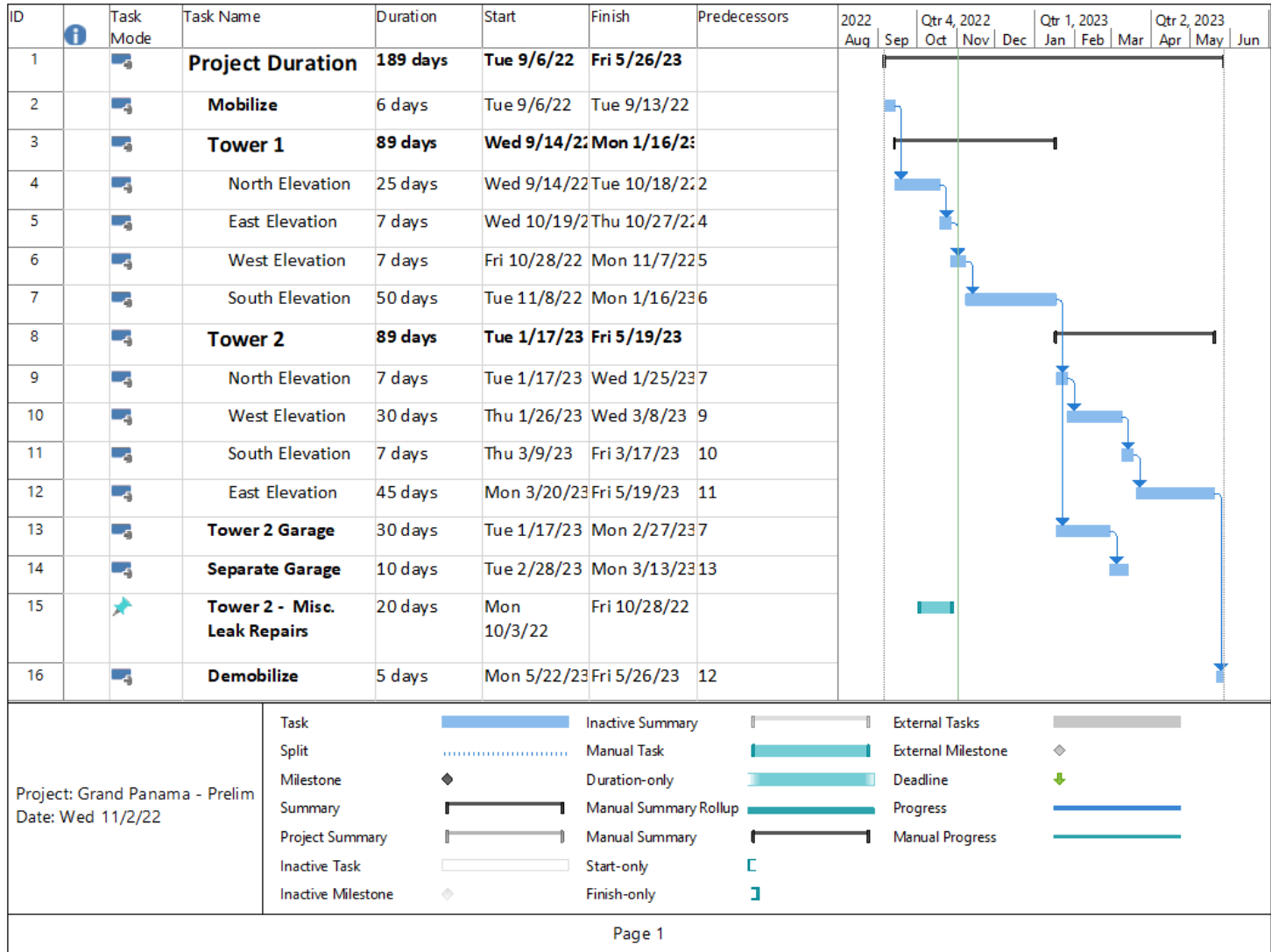




Grand Panama Towers 1 & 2

Progress Report

11-10-22



Schedule

- No Revisions made
- Lost Work Days:
 - 9/28/22 – Strong Winds
 - 9/29/22 – Strong Winds
 - 10/13/22 – Rain
 - 10/17/22 – Rain

Areas in Progress



Swing Stage Drops – Tower 1

