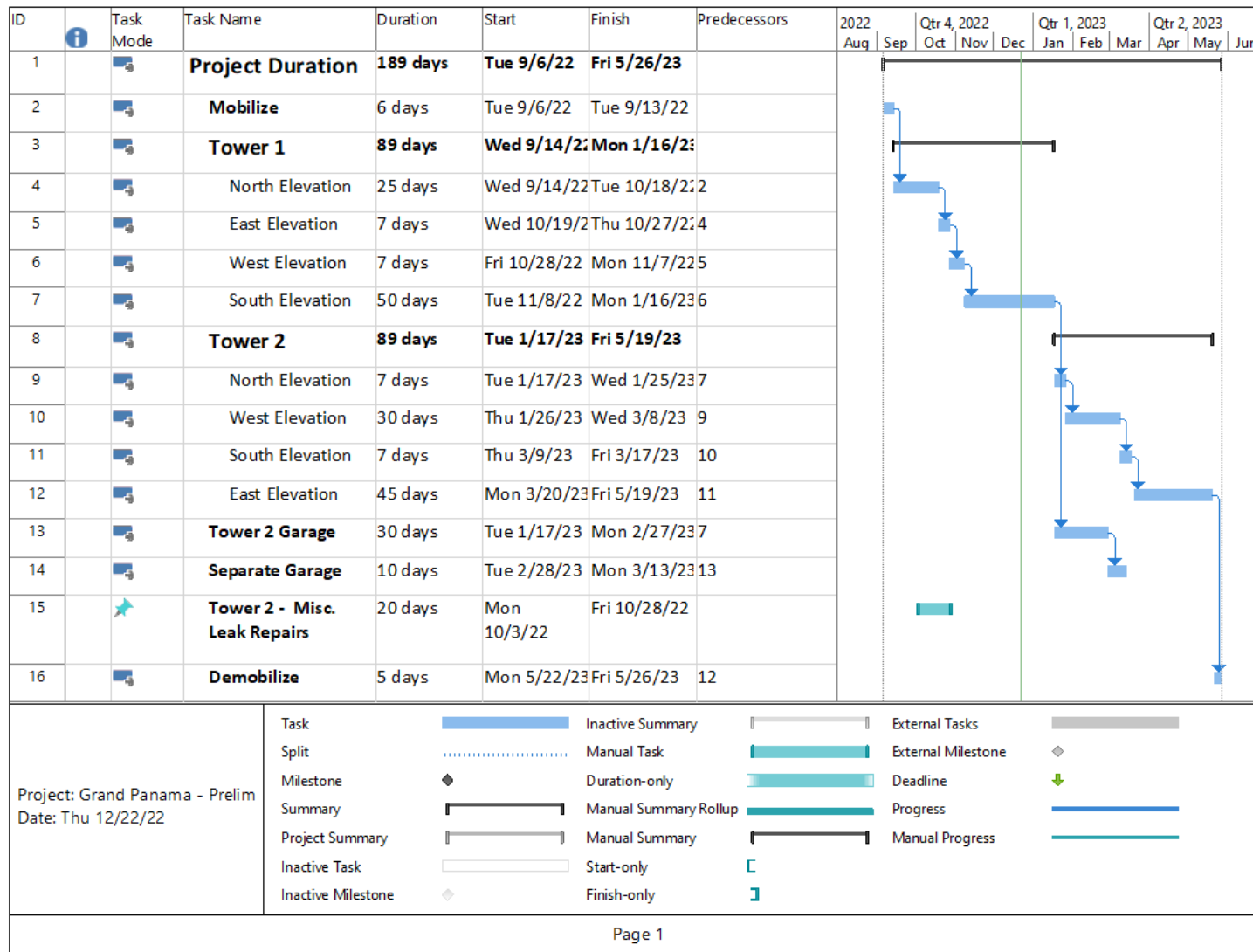




# Grand Panama Towers 1 & 2

Progress Report

12-22-22



# Schedule

- No Revisions made at this time
- Lost Work Days:
  - 9/28/22 – Strong Winds
  - 9/29/22 – Strong Winds
  - 10/13/22 – Rain
  - 10/17/22 – Rain
  - 11/10/22 – Wind/Rain
  - 11/11/22 – Wind
  - 11/15/22 – Wind/Rain
  - 11/25/22 – Fog/Humidity
  - 11/30/22 – Rain
  - 12/8/22 – Heavy Fog/Humidity
  - 12/14/22 – Strong Wind/Rain
  - 12/20/22 – Rain



# Areas in Progress



# Swing Stage Drops – Tower 1

