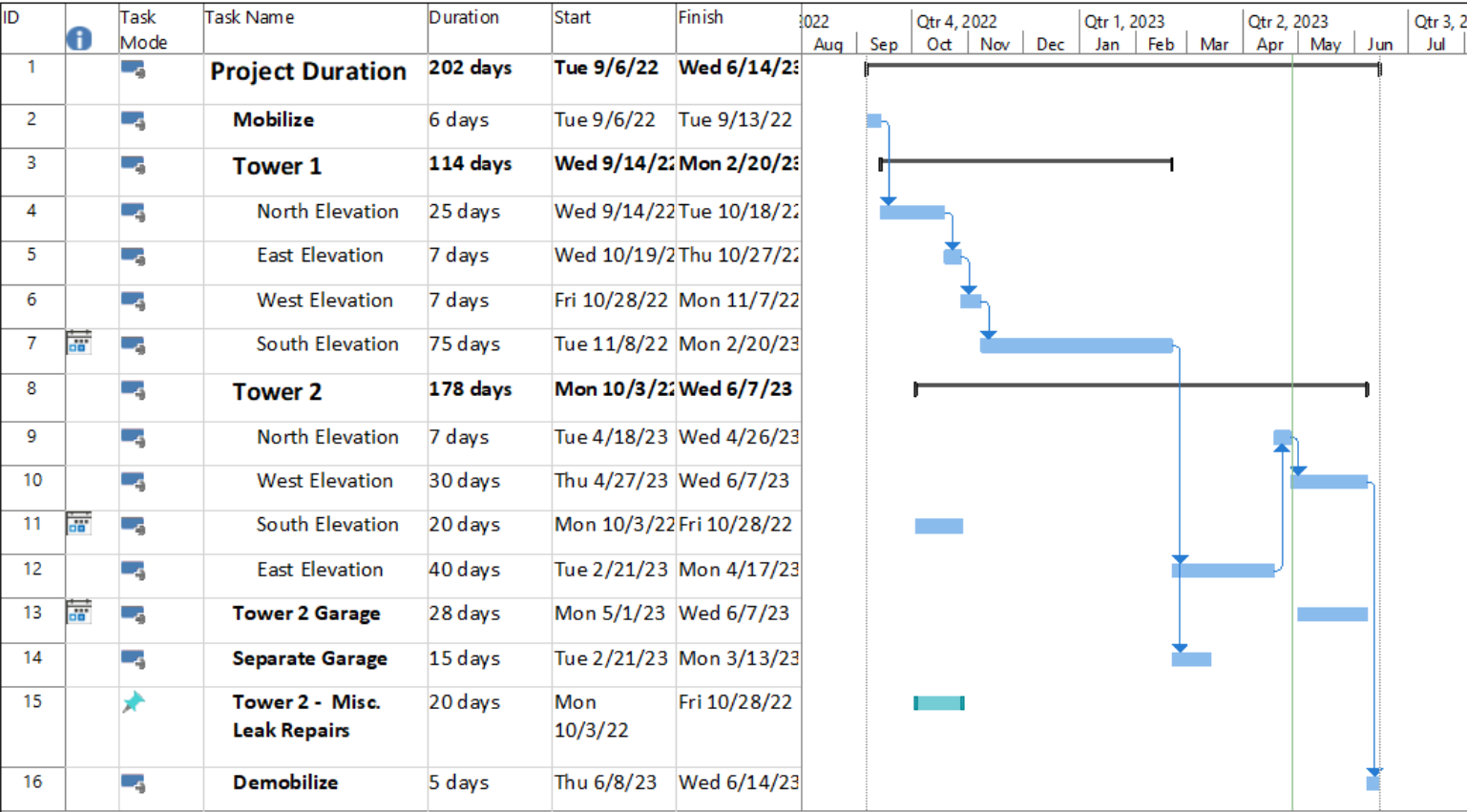


Grand Panama Towers 1 & 2

Progress Report

4-28-23

Schedule



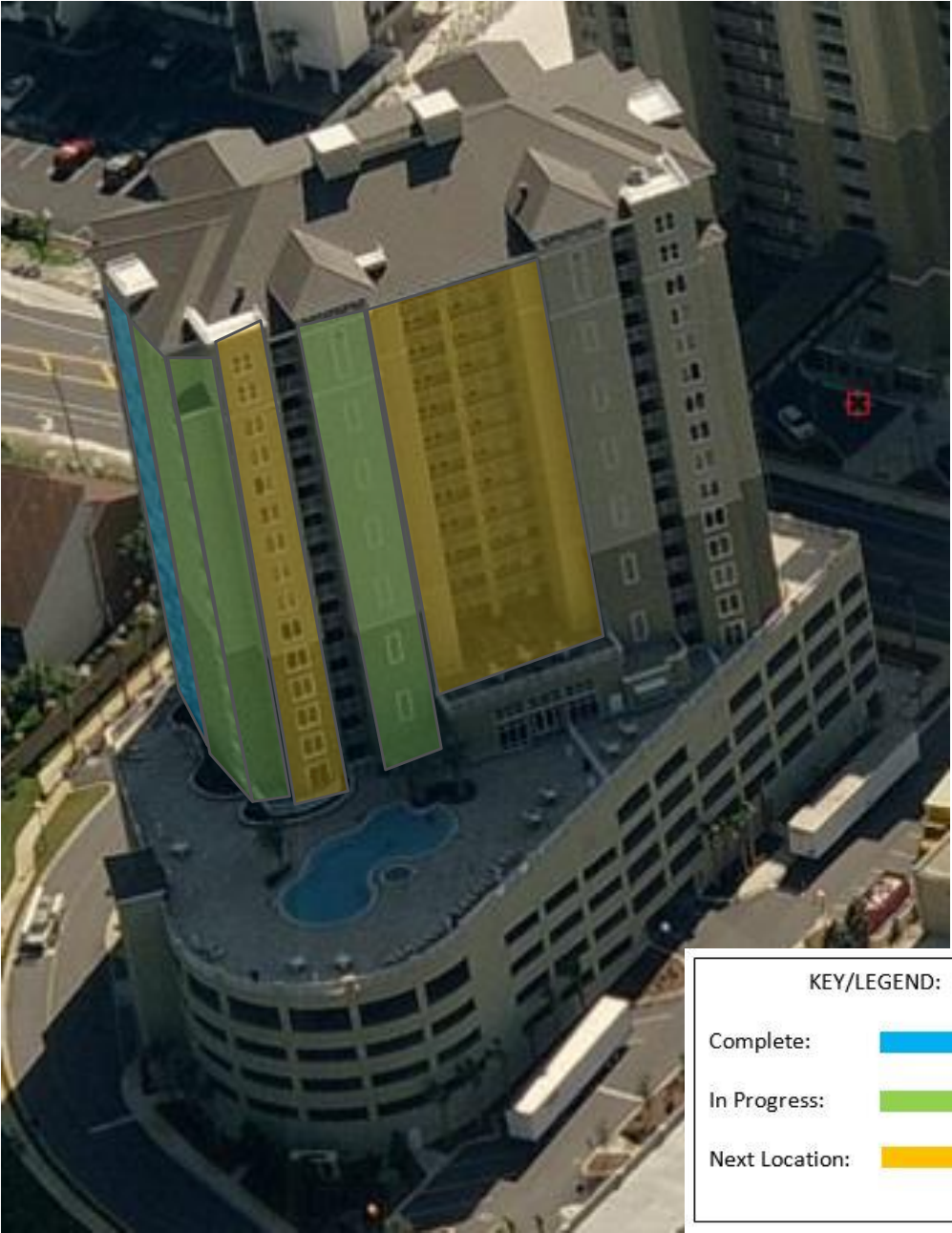
- Lost Work Days:
 - 9/28/22 – Strong Winds
 - 9/29/22 – Strong Winds
 - 10/13/22 – Rain
 - 10/17/22 – Rain
 - 11/10/22 – Wind/Rain
 - 11/11/22 – Wind
 - 11/15/22 – Wind/Rain
 - 11/25/22 – Fog/Humidity
 - 11/30/22 – Rain
 - 12/8/22 – Heavy Fog/Humidity
 - 12/14/22 – Strong Wind/Rain
 - 12/20/22 – Rain
 - 12/23/22 – Freezing Temperatures
 - 1/3/23 – Rain
 - 1/4/23 – Rain
 - 1/27/23 – Rain
 - 1/30/23 – Heavy Fog/Humidity
 - 1/31/23 – Rain
 - 2/1/23 – Heavy Fog/Humidity
 - 2/2/23 – Rain/Humidity
 - 2/3/23 – Rain/Humidity
 - 3/3/23 – Wind
 - 3/7/23 – Wind
 - 3/13/23 – Rain/Humidity
 - 4/3/23 – Rain
 - 4/13/23 – Rain/Wind
 - 4/14/23 – Rain
 - 4/27/23 – Rain/Wind

Project: Grand Panama - Prelim
Date: Fri 4/28/23

Task		Inactive Summary		External Tasks	
Split		Manual Task		External Milestone	
Milestone		Duration-only		Deadline	
Summary		Manual Summary Rollup		Progress	
Project Summary		Manual Summary		Manual Progress	
Inactive Task		Start-only			
Inactive Milestone		Finish-only			

Page 1

Areas in Progress

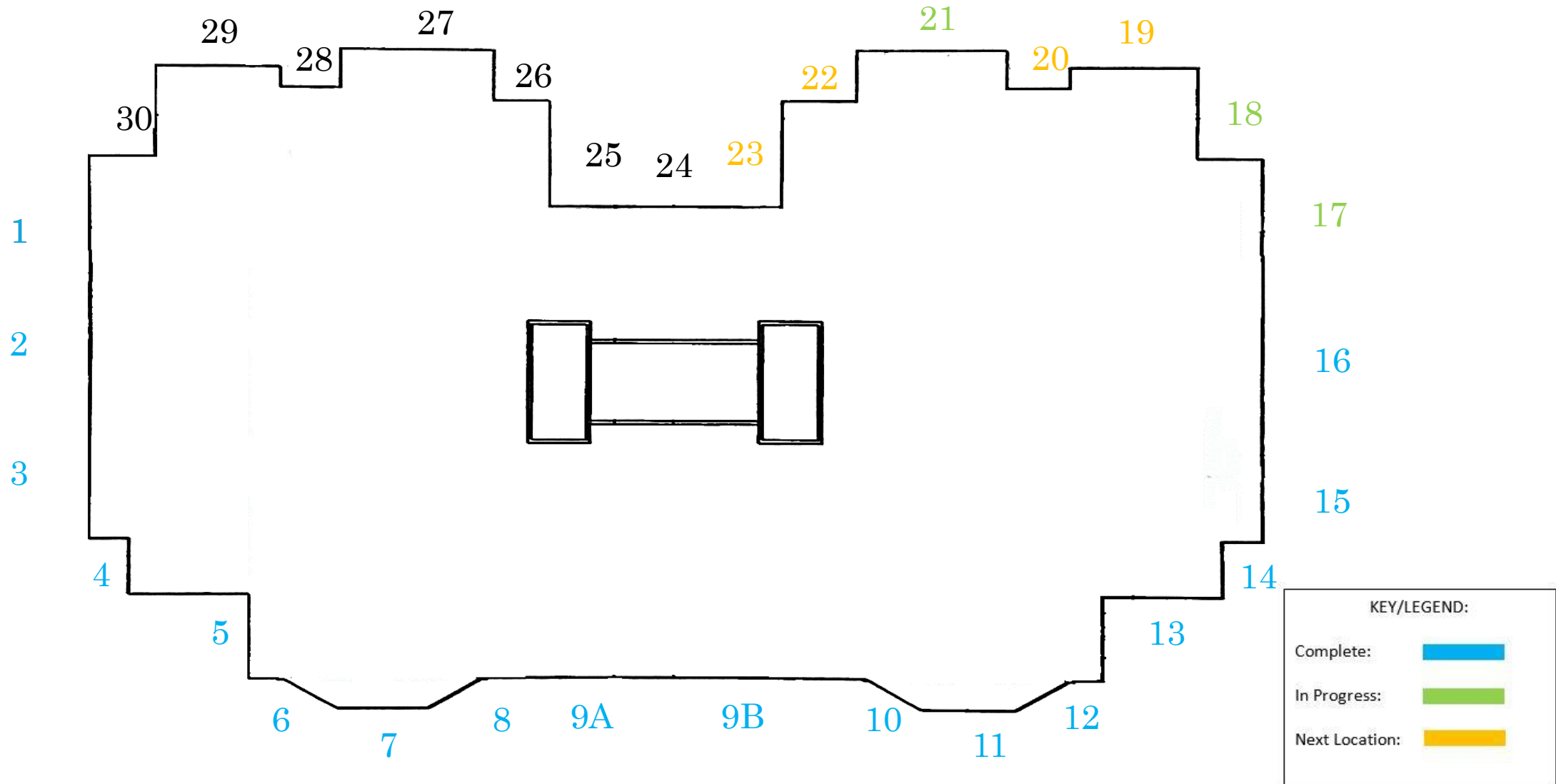


KEY/LEGEND:

Complete:	
In Progress:	
Next Location:	



Swing Stage Drops – Tower 2



Swing Stage Drops – Tower 1

