

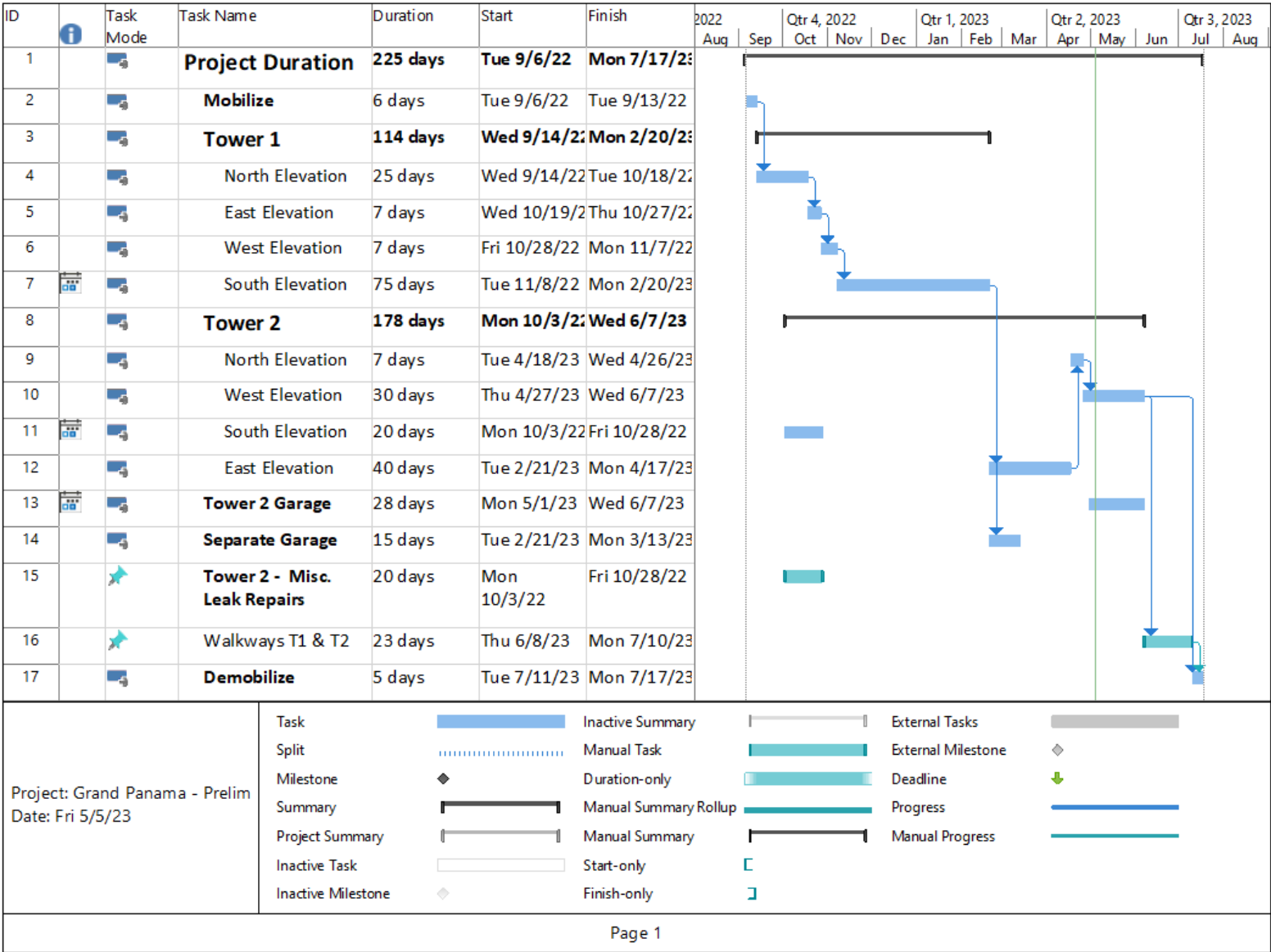


# Grand Panama Towers 1 & 2

Progress Report

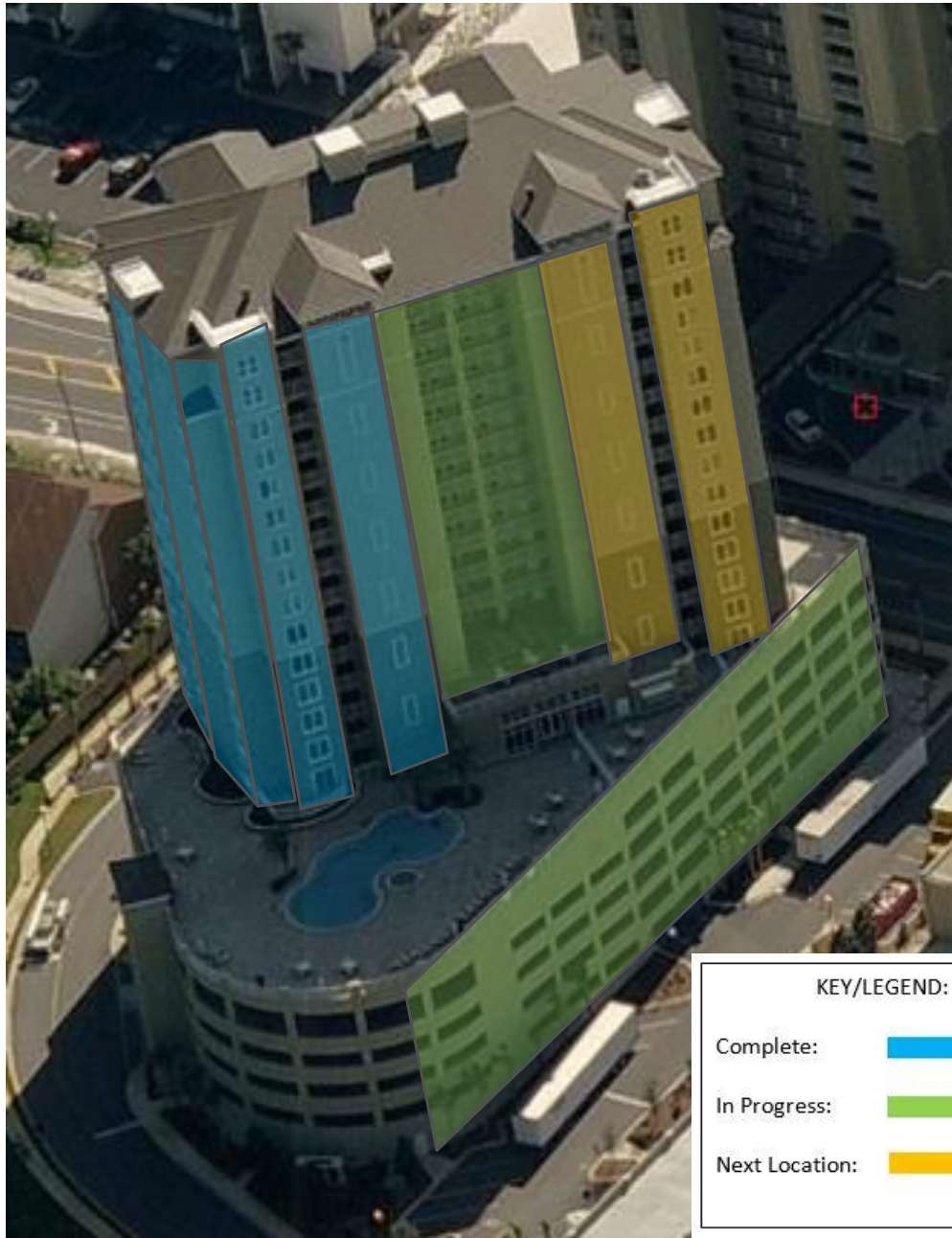
5-5-23

# Schedule

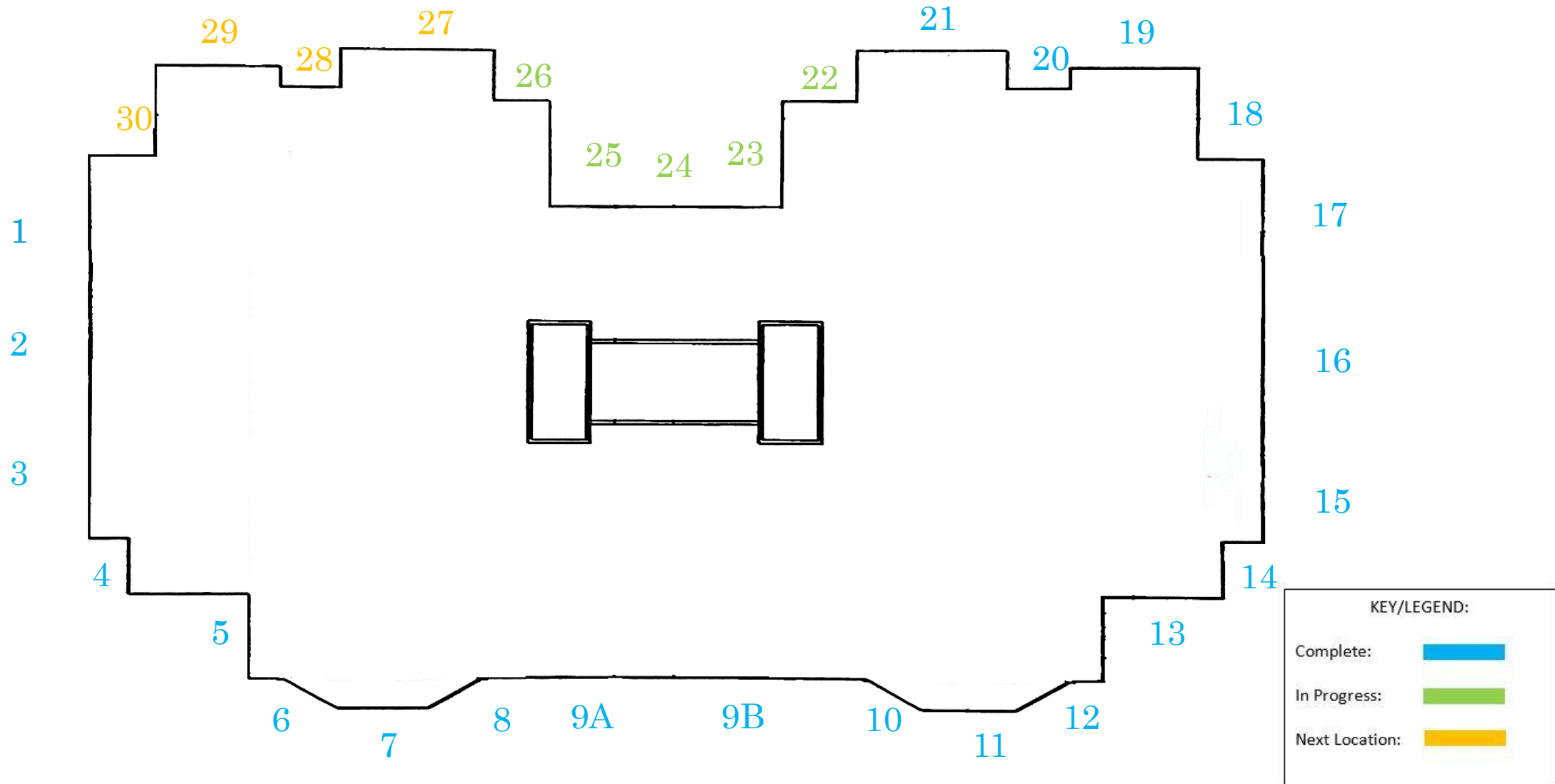


- Added the Walkway Coatings CO into the schedule
- Lost Work Days:
  - 9/28/22 – Strong Winds
  - 9/29/22 – Strong Winds
  - 10/13/22 – Rain
  - 10/17/22 – Rain
  - 11/10/22 – Wind/Rain
  - 11/11/22 – Wind
  - 11/15/22 – Wind/Rain
  - 11/25/22 – Fog/Humidity
  - 11/30/22 – Rain
  - 12/8/22 – Heavy Fog/Humidity
  - 12/14/22 – Strong Wind/Rain
  - 12/20/22 – Rain
  - 12/23/22 – Freezing Temperatures
  - 1/3/23 – Rain
  - 1/4/23 – Rain
  - 1/27/23 – Rain
  - 1/30/23 – Heavy Fog/Humidity
  - 1/31/23 – Rain
  - 2/1/23 – Heavy Fog/Humidity
  - 2/2/23 – Rain/Humidity
  - 2/3/23 – Rain/Humidity
  - 3/3/23 – Wind
  - 3/7/23 – Wind
  - 3/13/23 – Rain/Humidity
  - 4/3/23 – Rain
  - 4/13/23 – Rain/Wind
  - 4/14/23 – Rain
  - 4/27/23 – Rain/Wind

# Areas in Progress



# Swing Stage Drops – Tower 2



# Swing Stage Drops – Tower 1

