

Grand Panama Towers 1 & 2

Progress Report

6-9-2023

Schedule

ID	Task Mode	Task Name	Duration	Start	Finish	2022		Qtr 4, 2022				Qtr 1, 2023			Qtr 2, 2023			Qtr 3, 2023	
						Aug	Sep	Oct	Nov	Dec	Jan	Feb	Mar	Apr	May	Jun	Jul	Aug	
1		Project Duration	220 days	Tue 9/6/22	Mon 7/10/23														
2		Mobilize	6 days	Tue 9/6/22	Tue 9/13/22														
3		Tower 1	114 days	Wed 9/14/22	Mon 2/20/23														
4		North Elevation	25 days	Wed 9/14/22	Tue 10/18/22														
5		East Elevation	7 days	Wed 10/19/22	Thu 10/27/22														
6		West Elevation	7 days	Fri 10/28/22	Mon 11/7/22														
7		South Elevation	75 days	Tue 11/8/22	Mon 2/20/23														
8		Tower 2	170 days	Mon 10/3/22	Fri 5/26/23														
9		North Elevation	7 days	Tue 4/18/23	Wed 4/26/23														
10		West Elevation	22 days	Thu 4/27/23	Fri 5/26/23														
11		South Elevation	20 days	Mon 10/3/22	Fri 10/28/22														
12		East Elevation	40 days	Tue 2/21/23	Mon 4/17/23														
13		Tower 2 Garage	38 days	Mon 5/1/23	Wed 6/21/23														
14		Separate Garage	15 days	Tue 2/21/23	Mon 3/13/23														
15		Tower 2 - Misc. Leak Repairs	20 days	Mon 10/3/22	Fri 10/28/22														
16		Walkways T1 & T2	25 days	Tue 5/30/23	Mon 7/3/23														
17		Demobilize	5 days	Tue 7/4/23	Mon 7/10/23														

- Added the Walkway Coatings CO into the schedule
- Lost Work Days:
 - 9/28/22 – Strong Winds
 - 9/29/22 – Strong Winds
 - 10/13/22 – Rain
 - 10/17/22 – Rain
 - 11/10/22 – Wind/Rain
 - 11/11/22 – Wind
 - 11/15/22 – Wind/Rain
 - 11/25/22 – Fog/Humidity
 - 11/30/22 – Rain
 - 12/8/22 – Heavy Fog/Humidity
 - 12/14/22 – Strong Wind/Rain
 - 12/20/22 – Rain
 - 12/23/22 – Freezing Temperatures
 - 1/3/23 – Rain
 - 1/4/23 – Rain
 - 1/27/23 – Rain
 - 1/30/23 – Heavy Fog/Humidity
 - 1/31/23 – Rain
 - 2/1/23 – Heavy Fog/Humidity
 - 2/2/23 – Rain/Humidity
 - 2/3/23 – Rain/Humidity
 - 3/3/23 – Wind
 - 3/7/23 – Wind
 - 3/13/23 – Rain/Humidity
 - 4/3/23 – Rain
 - 4/13/23 – Rain/Wind
 - 4/14/23 – Rain
 - 4/27/23 – Rain/Wind

Project: Grand Panama - Prelim
Date: Fri 6/9/23

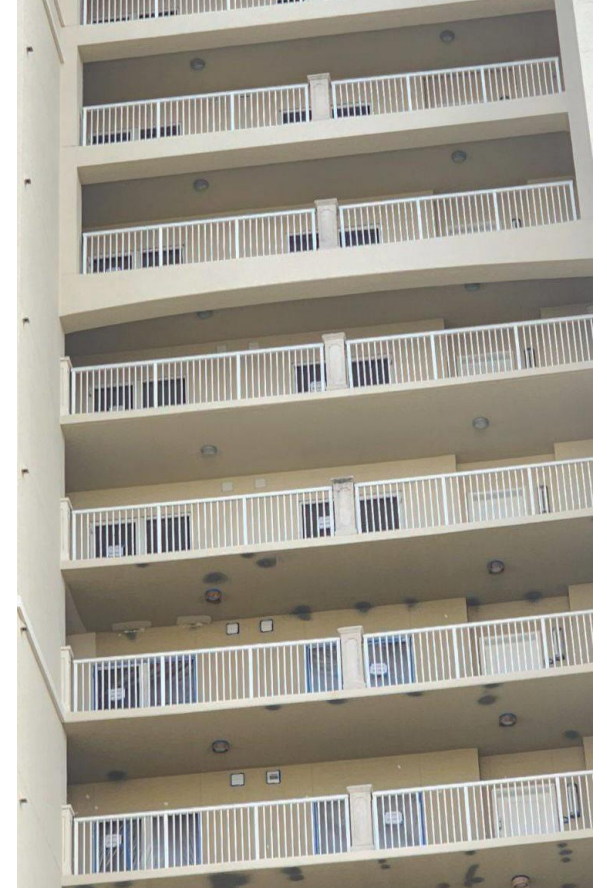
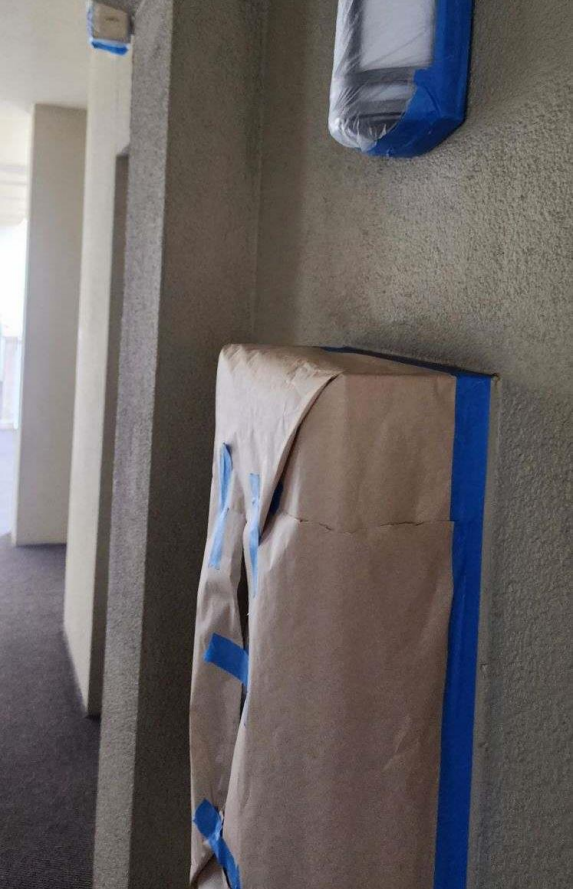
Task		Inactive Summary		External Tasks	
Split		Manual Task		External Milestone	
Milestone		Duration-only		Deadline	
Summary		Manual Summary Rollup		Progress	
Project Summary		Manual Summary		Manual Progress	
Inactive Task		Start-only			
Inactive Milestone		Finish-only			



Areas in Progress

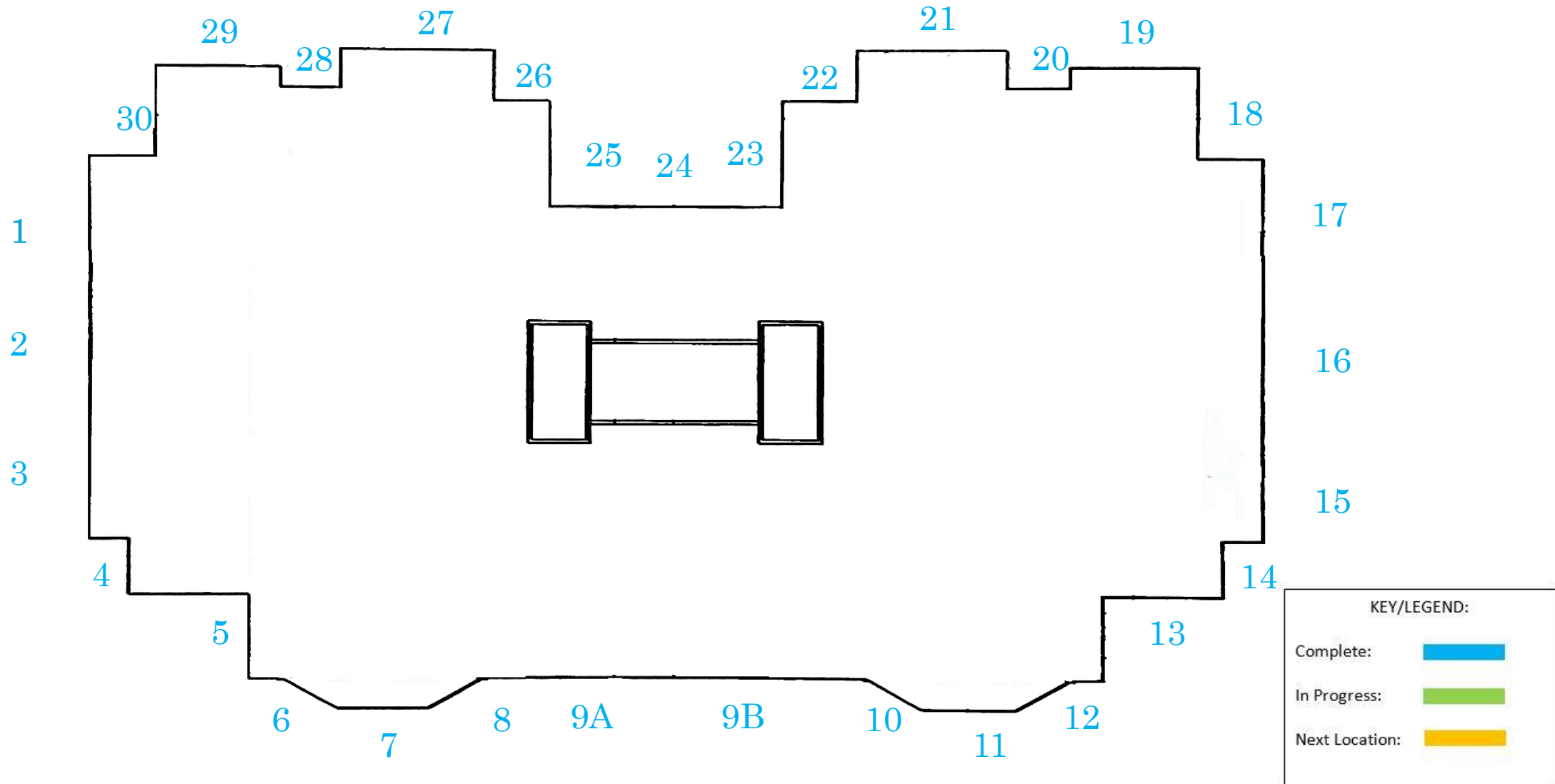
North Tower
Walkways –
Complete down to
16th floor.
Beginning 15 and
14.

KEY/LEGEND:	
Complete:	
In Progress:	
Next Location:	



Progress Pictures

Swing Stage Drops – Tower 2



Swing Stage Drops – Tower 1

