

# Grand Panama Beach Resort Evacuation Information

## Emergency Phone Listing

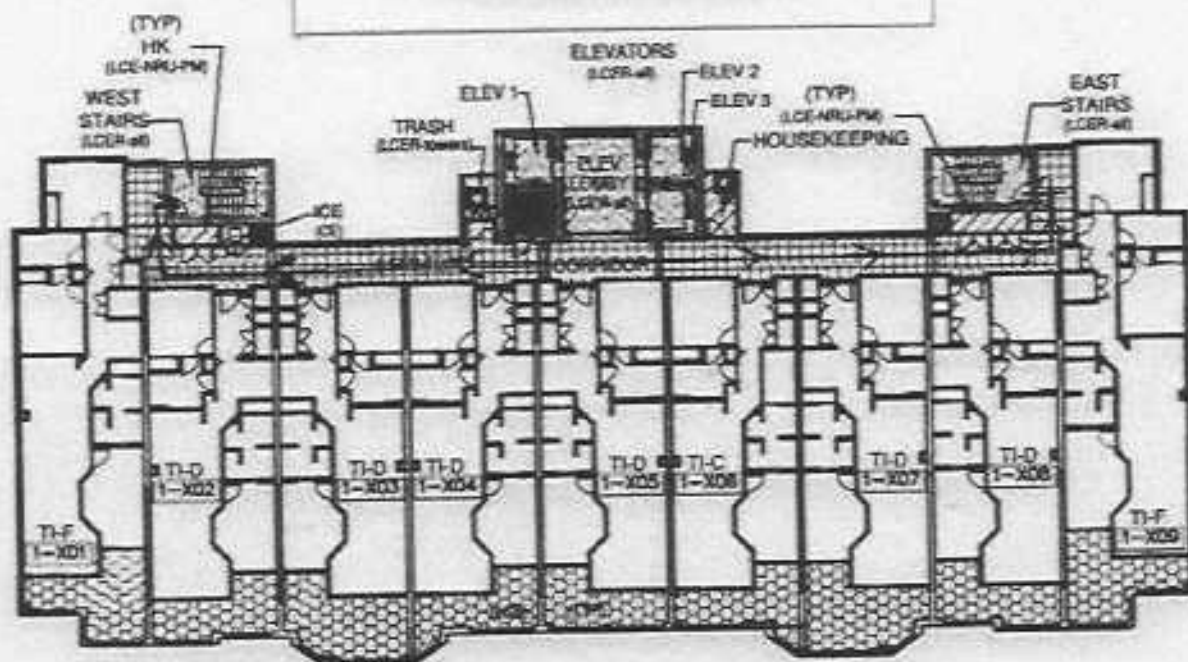
<u>NAME</u>	<u>NUMBER</u>
<b>Police</b>	
Sheriff, Emergency Bay County	911
Sheriff, Bay County (Non-Emergency)	850-747-4700
Florida Highway Patrol	850-872-4150
Panama City Beach Police (Non-Emergency)	850-233-5000
<b>Medical</b>	
Ambulance	911
Paramedics	911
Poison Control	1-800-222-1222
<b>Hospitals - Panama City</b>	
Gulf Coast Medical      449 W 23rd Street	850-769-8341
Bay Medical              615 N Bonita Avenue	850-769-1511
<b>Emergency Facilities</b>	
Ascension Sacred Heart    11111 PCB Parkway (across from Publix)	850-804-2900
HCA Florida Breakfast Pt   9318 PCB Parkway (approximately 2 miles east of Publix)	850-708-6555
<b>Grand Panama Security</b>	850-625-5960

### General

- Begin an orderly evacuation by using EXITS AND STAIRWAYS. CLOSE DOORS behind you.
- Hallways and stairways are equipped with emergency lighting.
- Proceed to the parking lots or the beach area.

# Grand Panama Beach Resort

## Tower 1 South Tower Evacuation Route



# Grand Panama Beach Resort

## Tower 2 North Tower Evacuation Route

