

# GRAND PANAMA BEACH RESORT

## EMERGENCY PHONE LISTING AND EVACUATION INFORMATION

### NAME

### NUMBER

#### **POLICE**

Sheriff, Emergency Bay County	911
Sheriff, Bay County (Non-Emergency)	(850) 747-4700
Florida Highway Patrol	(850) 872-4150
Panama City Beach Police (Non-Emergency)	(850) 233-5000

#### **MEDICAL**

Ambulance	911
Paramedics	911
Poison Control	(800) 222-1222

#### **HOSPITALS**

Gulf Coast Medical – W 23 <sup>rd</sup> St, Panama City	(850) 769-8341
Bay Medical – 615 N Bonita Ave, Panama City	(850) 769-1511

#### **EMERGENCY FACILITIES**

Ascension Sacred Heart – 11111 PCB Parkway (Across from Publix)	(850) 804-2900
HCA Florida Breakfast Pt – 9318 PCB Parkway (Approximately 2 miles east of Publix)	(850) 708-6555

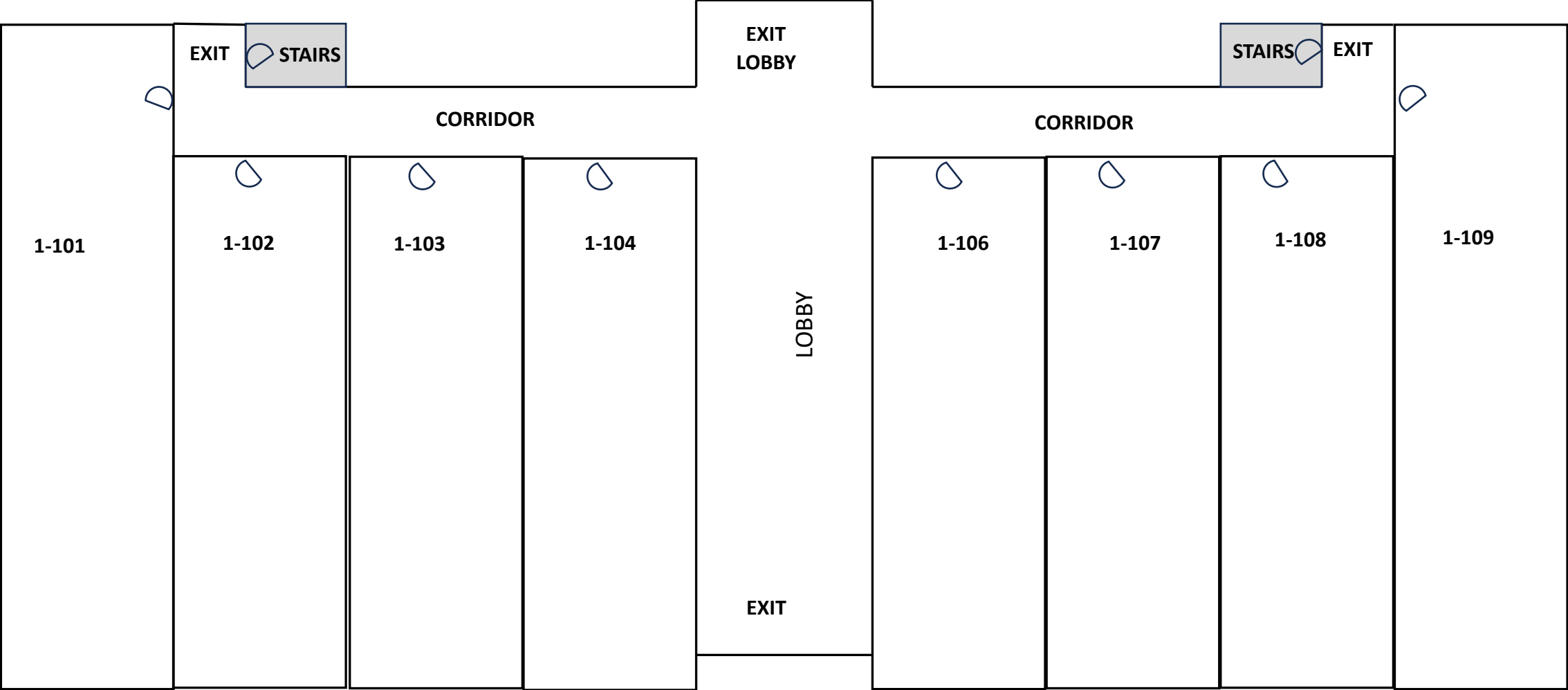
#### **GRAND PANAMA**

Security	(850) 625-5960
----------	----------------

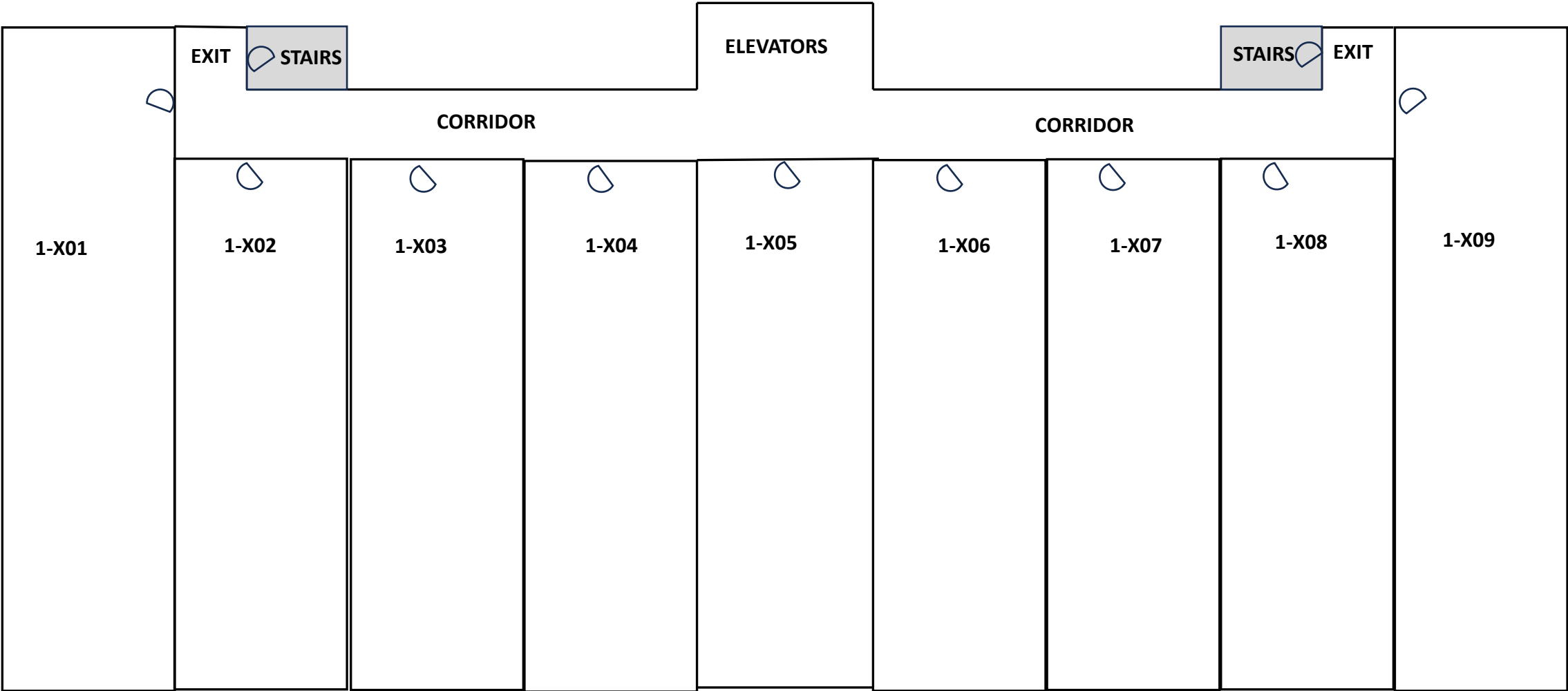
#### **GENERAL**

- Begin an orderly evacuation by using EXITS AND STAIRWAYS. CLOSE DOORS behind you.
- Hallways and stairways are equipped with emergency lighting.
- Proceed to the parking lots or the beach area.

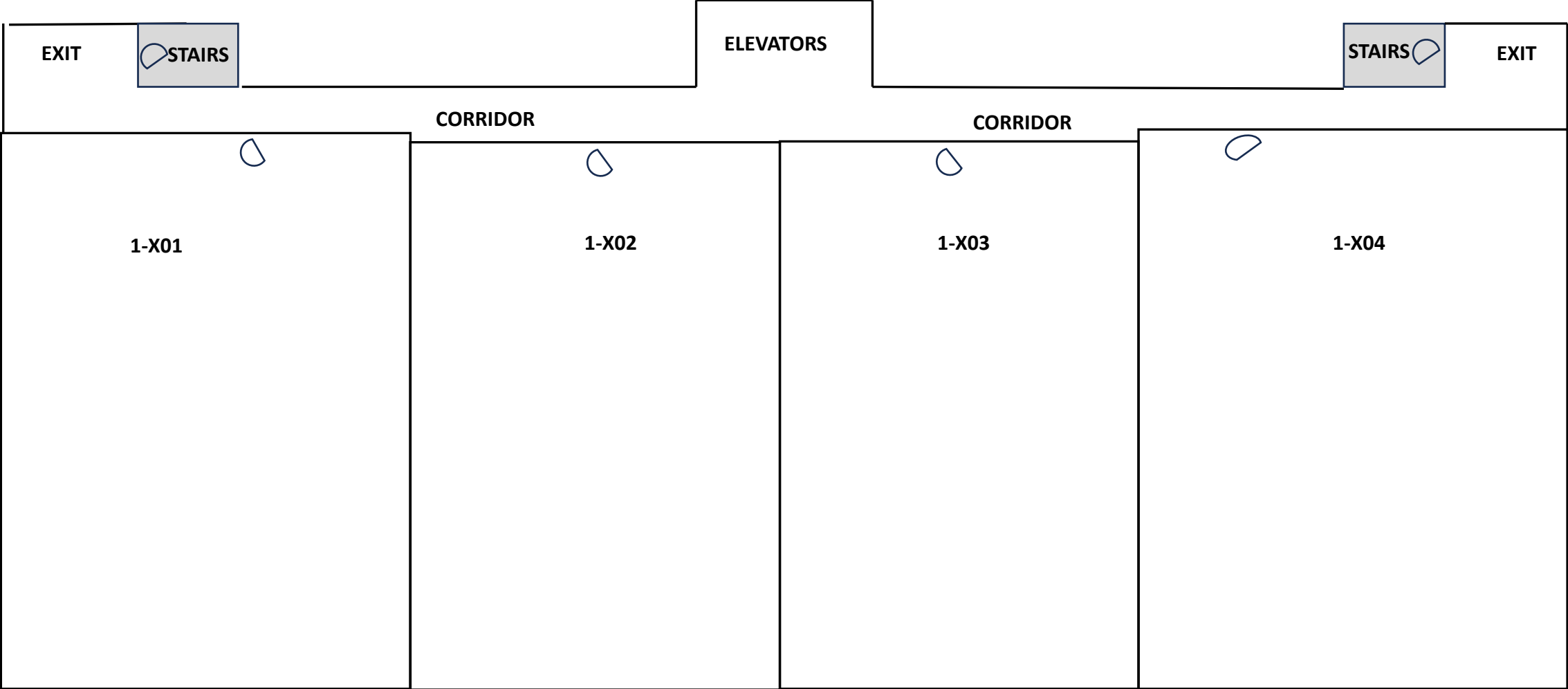
GRAND PANAMA BEACH RESORT  
TOWER 1 - FLOOR 1  
EVACUATION MAP



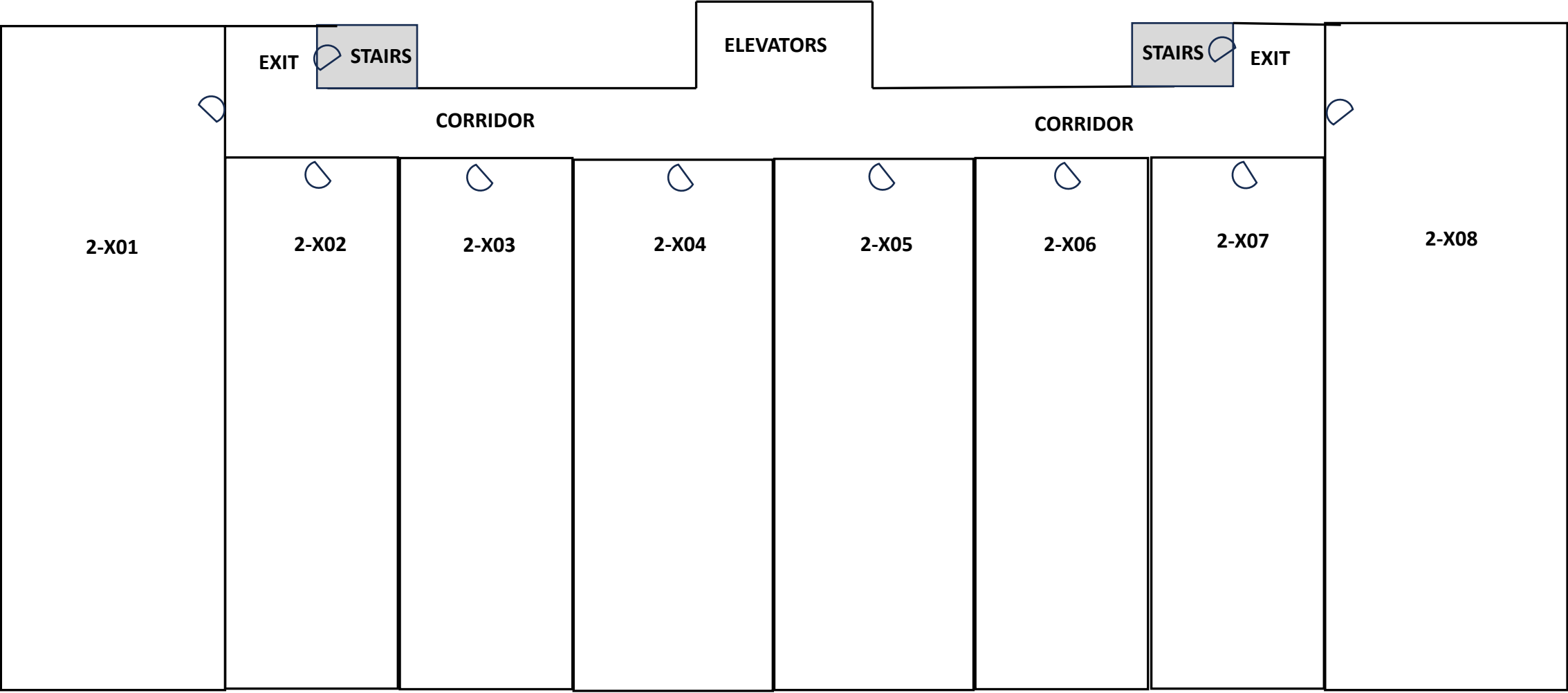
GRAND PANAMA BEACH RESORT  
TOWER 1 - FLOORS 2-20  
EVACUATION MAP



GRAND PANAMA BEACH RESORT  
TOWER 1 - FLOORS 21-22  
EVACUATION MAP



GRAND PANAMA BEACH RESORT  
TOWER 2 - FLOORS 1-13  
EVACUATION MAP



GRAND PANAMA BEACH RESORT  
TOWER 2 - FLOORS 14-15  
EVACUATION MAP

